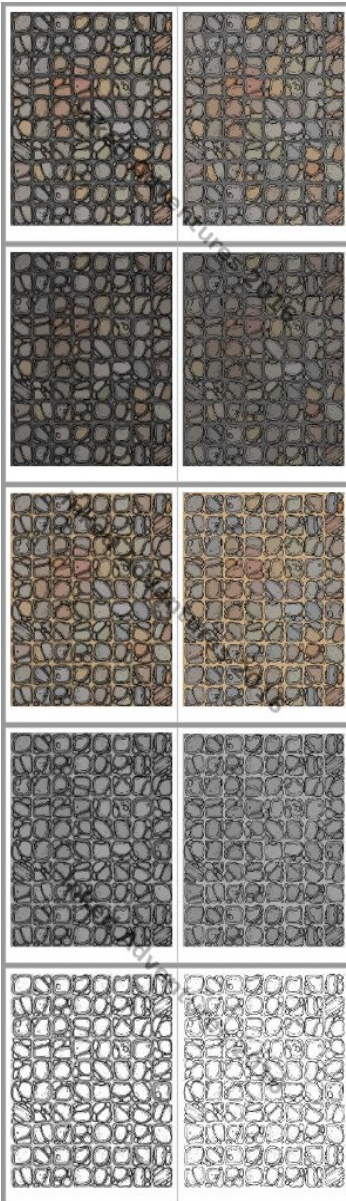




# Hand Drawn Cavern Floor Cut-Up Sheets

## Simple Caverns

Scale 1in=5ft for use with 25/27mm minis

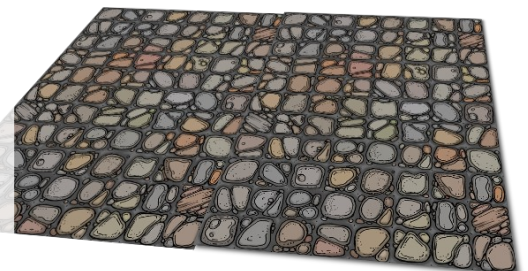
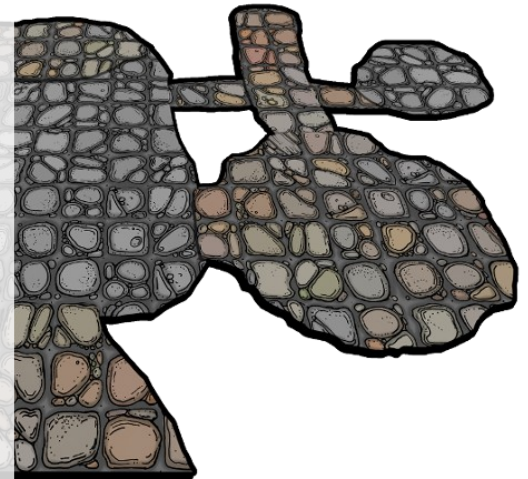


The *Simple Caverns* PDF has been designed for adaptability. The hand drawn cavern floor design can be home printed and trimmed into any shape. Print to paper, card or photo paper, and mount onto other media if required (we recommend something thin because sometimes you may wish to overlap connecting sections).

Letter-size and A4 format PDFs are provided. Always print "actual size" (or 100% scale) to maintain the dimensions of the 1 inch grid. Both PDFs have narrow margins. The Letter PDF design is an 8x10 inch area; the A4 PDF design is an 8x11 inch area.

We recommend that you browse the PDF, select a preferred page / shade and make at least one test print before printing multiple sheets since they can be intensive on ink (with the exception of the "line art only" pages). Select and print only the pages you require. Combining different cavern floor designs can be used to differentiate between passageways and high ceilinged caverns. The illustrative design is abstract, with game the grid being represented as flagstone-like rocks.

If sheets are printed whole and used like large tiles or a battlemat, the DM can improvise walls with other scenery, black card, or laminate the sheets so that they can be drawn on with dry-erase markers.



### Graphics Files

For players who want to create their own maps in an art program, or those who wish to use virtual tabletop software, we are providing 10 PNG files of the same designs from the PDF.

Specs: .PNG 24000x3300 pixels (8x11 inches grid), 300 DPI

Unfortunately we cannot provide technical advice regarding how to manipulate or prepare these files in a VTT program.

Please respect that these files are for non-distributable "personal use" only and that the artist and publisher retain rights to their work, in-part, whole or altered. Art (c) 2016 Billiam Babble, Inked Adventures.

### Pages in the PDF

1. Cavern Floor Colour Shadows
2. Cavern Floor Colour
3. Cavern Floor Colour Dark Shadows
4. Cavern Floor Colour Dark
5. Cavern Floor Colour Sandy Shadows
6. Cavern Floor Colour Sandy
7. Cavern Floor Grey Shadows
8. Cavern Floor Grey
9. Cavern Floor Line Art Shadows
10. Cavern Floor Line Art

**Printable Art Disclaimer:** Due to free-hand art methods used in the process of creating the designs contained in these files, we cannot always guarantee the exact dimensions and join-matching many consumers expect from digital designs used in tabletop play. Printing quality and colour may vary from printer to printer and differ depending upon the media printed to.

**Product Usage and Copyright:** The art contained in all files here is intended for printing for non-distributable use and personal use only (with tabletop players of the same group, within reason). All art (c) Inked Adventures / Billiam Babble 2016. If you are in doubt about usage or seeking permission to distribute this product, in part or whole, commercially or non-commercially, please email us at [inkedadventures@gmail.com](mailto:inkedadventures@gmail.com)



Our cut-up sections and tiles at Inked Adventures are mostly hand-drawn in ink on paper, before colour is added digitally. If you like the style, feel free to visit our website browse our other products - some of which are free!

<http://inkedadventures.com/main>

Thank you for downloading this product.  
*May your dungeon adventures be beautiful!*  
-Billiam Babble, Inked Adventures 2016