

Arcane Library

Tile & Cut-Up Sections

What this pack is: A collection of PDFs intended as a printable modular floor-plan accessory for tabletop fantasy roleplaying games, for use with miniature figures (not included). *What this pack is not:* The files are meant for home printing only and are not intended as a resource for digital mapping programs or VTT systems.

Inked Adventures produce hand drawn modular dungeon sections and tiles. Nearly all of the art is draft on paper first. We hope to recreate an illustrative style which has become marginalised in a world of high definition textures and computerised precision.

Disclaimer: This product may lack finite precision of computer generated plans, and may contain unintentional marks left over from the original art process. Hopefully this won't detract from your overall enjoyment in using this product in your games. If it does, please feel free to contact us on inkedadventures@gmail.com

PDF documents in the folders:

Please note that the PDFs *do not use layers* so that they can be viewed on non-Adobe PDF viewers, legacy software, and multiple platforms or devices.

1. Arcane Library.

The four page PDF will print one large library "tile". These are four corners of one multilevel room. Once trimmed, they create a 18x13 in tile (including 3D-effect walls). The floorspace equates to 17 squares by 12 squares, in mapping terms this 85x60ft when 1inch = 5ft. There are four levels, concentric walkways, each linked by steps. It is up to the games master how deep/high each level is, including the steepness of the steps. As a guide, anything between 6 and 12ft is feasible. The ceiling might be vaulted with candle filled chandeliers, or perhaps magical floating light sources follow the readers around. In the case of an urban setting there might be windows higher up the walls or some sort of stained glass skylight. We are hoping that the design works equally well as a dungeon room or a building interior. Entrances and exits can be added using the Connectors and Door Counters in the gaps between the bookcases (see below).

2. Small Rooms

These antechamber designs are a *Study*, *Scriptorium*, *Abandoned Archive* and a *Tome Vault*. The two page PDF will print three of each room.

3. Connectors and Door Counters

Connector archways, doorways and doors (see below), shaded to compliment different flagstone colours.

4. Bonus piece: Bookish Hallway.

This is an optional room-section which fits in with the library theme of this pack. The Bookish Hallway can be act as a gallery, corridor or secret library with four small exits (perhaps to the Small Rooms)

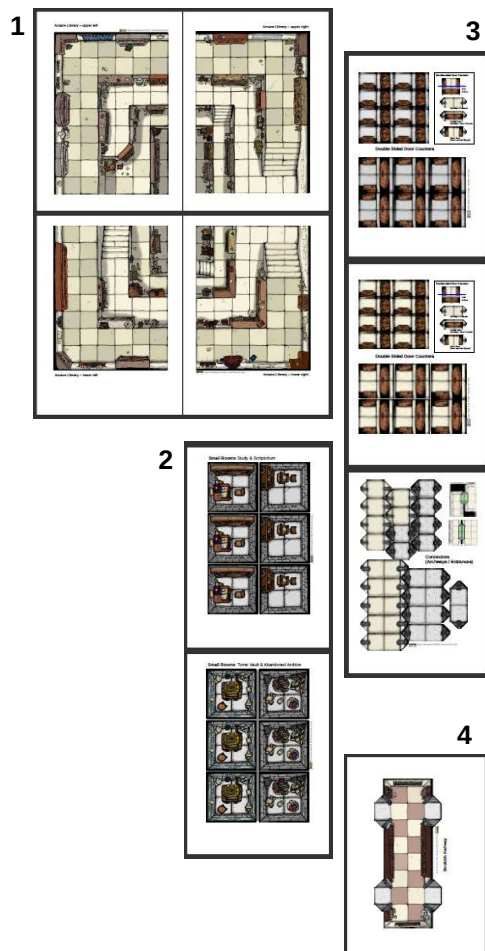
Paper Format / Colour vs. B/W Line Art

The PDFs included are in **A4** and **US Letter** size formats (in separate folders). As well as **colour** designs, the original **black and white line art** has been included for players who wish to save on printer ink, or those that like to colour in their gaming accessories (especially rewarding for very young players and their artistic parents!).

Printing

As with any printable product, look carefully through the PDF files before choosing what to print. You may want multiples of one section and have no interest in another. If you are unsure, we recommend printing the black and white line art designs first, which will minimise ink use.

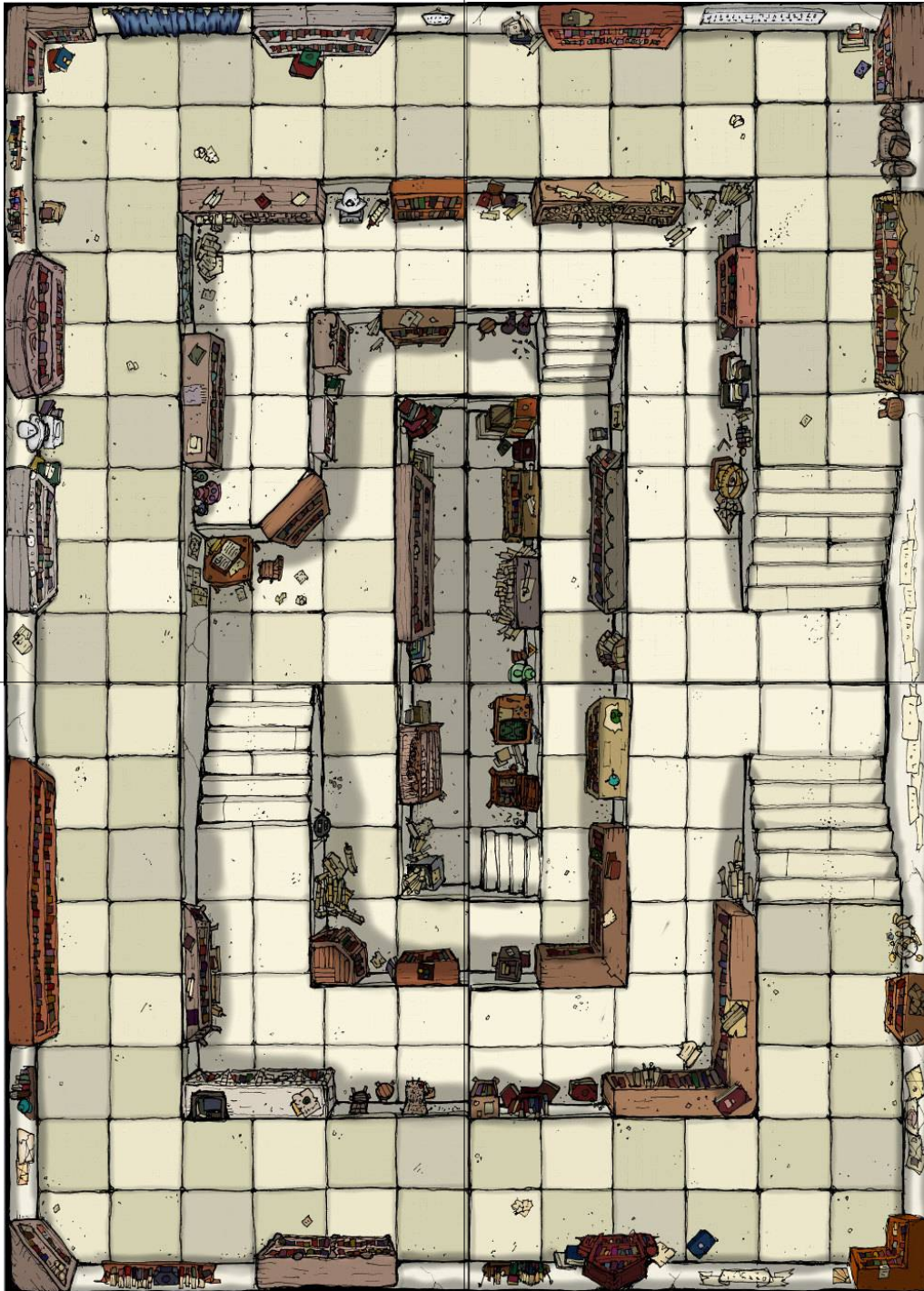
The designer prefers to print from a standard inkjet printer to light white card (card-stock) or glossy photo-paper and then trims with normal scissors. He sees the designs as both reusable and disposable. When no card is available, normal paper will suffice. Some elements are designed to overlap (especially the "Connector" pieces). Therefore caution is advised before printing to foam-card, when card or heavy paper may be more suitable. *Always print at 100% scale / "Actual Size".*



All art contained herein is owned by Inked Adventures and the artist Billiam Babble (c) 2015. If you wish to re-use any elements for anything other than "personal use" within reason (for an individual or a small tabletop gaming group), please contact us for permission. inkedadventures@gmail.com <http://inkedadventures.com>

1. Upper Left

2. Upper Right



3. Lower Left

4. Lower Right

Assembling the large Arcane Library tile

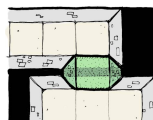
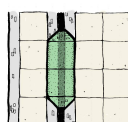
The Arcane Library room is printed across four sheets. We have not included tabs to save on margin space. The designer prefers to print to thin card (card stock) and make long tabs to the inside edges at least two of the sheets. Another method is to mount all four sheets, after trimming, on to a large piece of card or paper (A2 size, for example). Please note that the four corners were drawn on separate pages at 1to1 scale, which has resulted in a few very minor alignment errors (see *Disclaimer*).



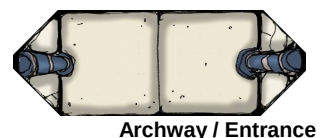
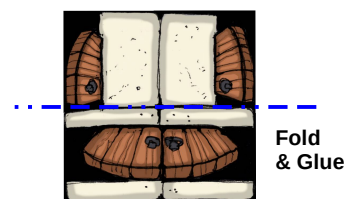
Most of the Inked Adventures products employ walls with a top-down 3D perspective effect. This effect works best when there is a slight gap between the modular pieces when laid on a dark surface (1/5in or 5mm appx). 1 inch wide diamond shaped connector pieces link corridors to rooms by way of overlapping the walls. This is intended to retain the 3D perspective of the walls.

Flippable **Double-sided Door Counters** are also included. Simply cut out the square designs and fold in the middle (and glue) to create the double-sided counter. This can denote an open or closed door.

Both the Connectors and Door Counters are completely optional in play, as many games masters may have other preferred door counters or 3D/2.5D door models.



Double-sided Door Counters



Closed Door
Archway + Door Counter

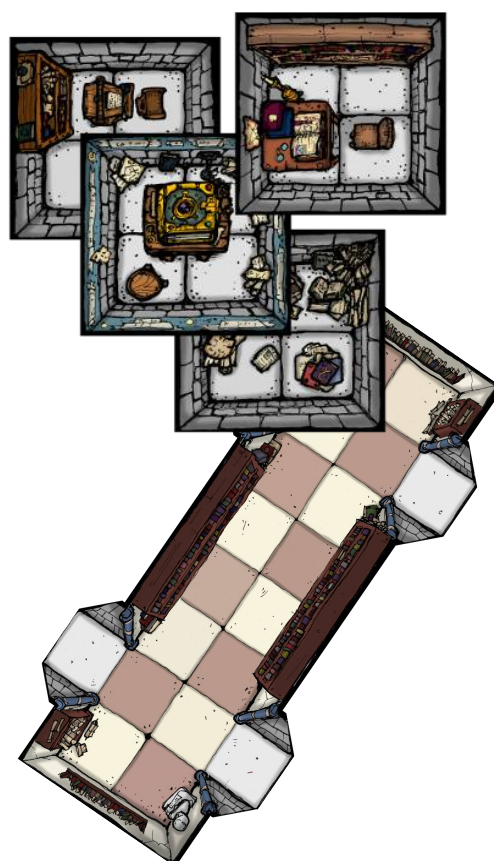


Open Door
(Door counter flipped)

The **Small Rooms** in this pack are partly inspired by monk's "cells" where scribes illuminated ostentatious manuscripts in modest, cramped impoverished surroundings. This was in stark contrast to the decorated architecture of open cloisters and church, or cathedral, nearby. These scholarly rooms of toil can adjoin the large library tile at the edges or be connected together in a cluster to create a hive-like mini maze.

The small rooms will also fit in perfectly with *Inked Adventures Modular Sections Basic Pack*.


As an experiment, we have incorporated the archway connectors in the design of the bonus piece, the **Bookish Hallway**. This makes it less "modular" but we felt it would be a shame not to include this section in a library themed pack. The end walls can be converted to create a gallery or corridor by using the double-square archway Connectors (see sample map overleaf).





Sample Map & Possible Plan

Arcane Library tile with multiple print-outs of the Small Rooms and Bookish Hallway

 Inked Adventures © 2015 Personal use only.



inkedadventures.com

Thank you for purchasing this product. May your dungeons be beautiful.